

Installing Socrates

Components Installed	2
Post Installation Steps	2
Install Locations	2
Twain Data Source Manager:	2
Installation	2
Serial Number	4
Registering Socrates	5
Installing Socrates on Multiple Workstations	5
Check Version number	6
How to Create the Install folder	6
PC USERS	6
Default folder contents.....	8
Mac Users	8
MSSQL users	8
Manually copying these files.	9
Reinstalling without using defaults	9

COMPONENTS INSTALLED

Socrates Library and Support Files

Omnis Studio 4.3.2.1 Runtime

Java 6 JRE Release 26

Twain Data Source Manager

Visual C 2008 SP1 Redistributable Files

Socrates Demo Database

Post Installation Steps

OMNISJVM System Property is set to point to the Java 6 JRE jvm.dll file location which allows Omnis to use this Java installation for running Java components internally.

Install Locations

Socrates conforms to Microsoft standards for install locations from Windows Vista installations and above.

Windows 7/8.1/10

Program files will be installed by default to c:\Program Files\Socrates\

User specific application data will be installed to c:\Users\<User>\AppData\Roaming\Socrates and

c:\Users\<User>\AppData\Local\TigerLogic\Studio\

Twain Data Source Manager:

Installs TWAINDSM.dll to Windows System folder (either 32bit or 64 bit version depending on OS type)

Also installs 32 bit version of TWAINDSM.dll to SysWOW64 directory when installing on 64 bit systems.

Microsoft Visual C 2008 SP1 Redist: see <http://www.microsoft.com/download/en/details.aspx?id=5582> for further details.

MAC

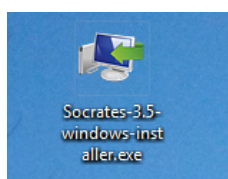
The Socrates application is installed in the main Applications folder, inside a main folder called Socrates.

INSTALLATION

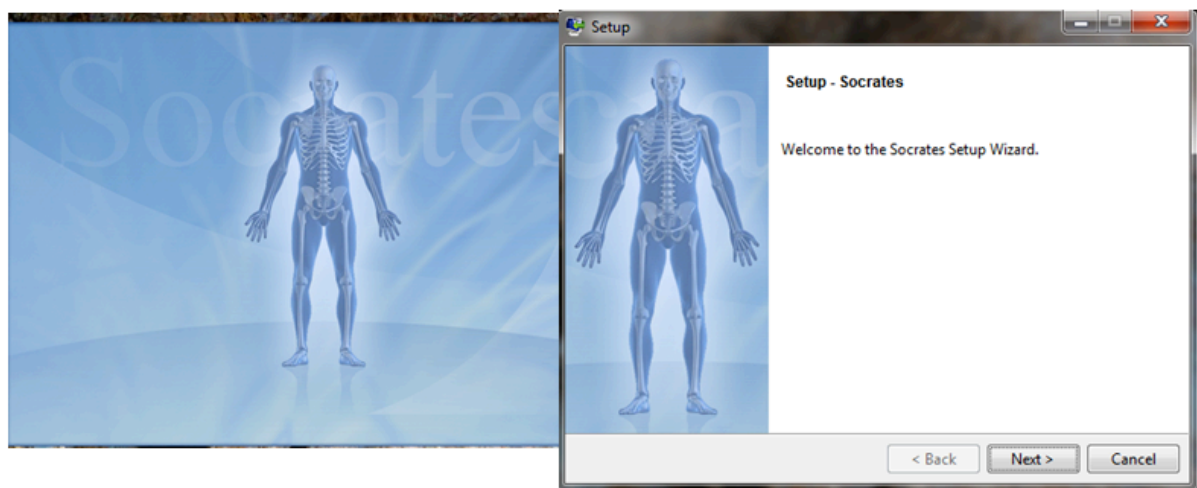
The SQLdatabase should be installed and set up before the client installation.

The Socrates program is usually installed from a link we will send you via email, or we may send a file via You Send It. There are different files for the PC and Mac version. The install files are .exe files which are zipped.

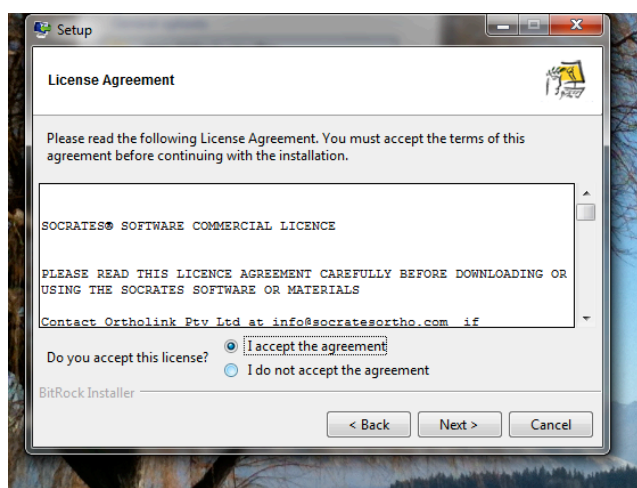
Once you receive the download link, save it, unzip it and this icon will appear.



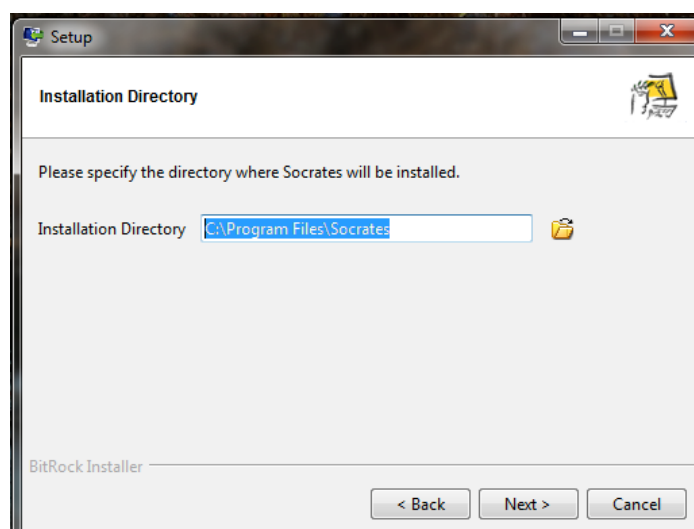
Double click to run.



Accept the licence conditions. A pdf copy is also installed in the Socrates folder.

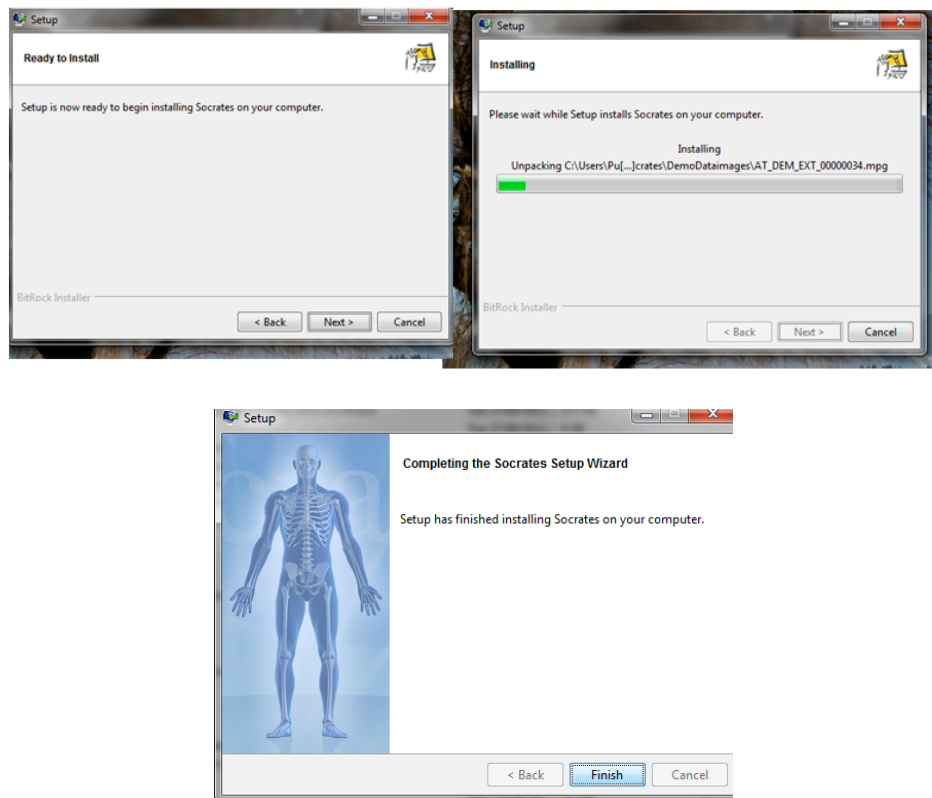


By default it will install in Program files on the C Drive unless specified otherwise.

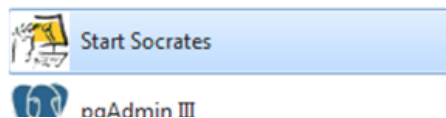


Click Next until you get to the finish.

INSTALLING SOCRATES



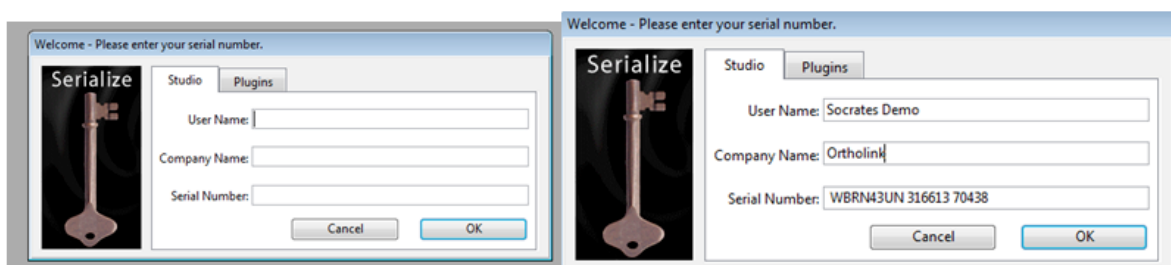
A short cut will install in the start menu.



If the short cut doesn't appear in the start menu locate the start Socrates short cut which is in the folder called Program Files/Socrates and put it where you want it to display - desktop or start bar.

Serial Number

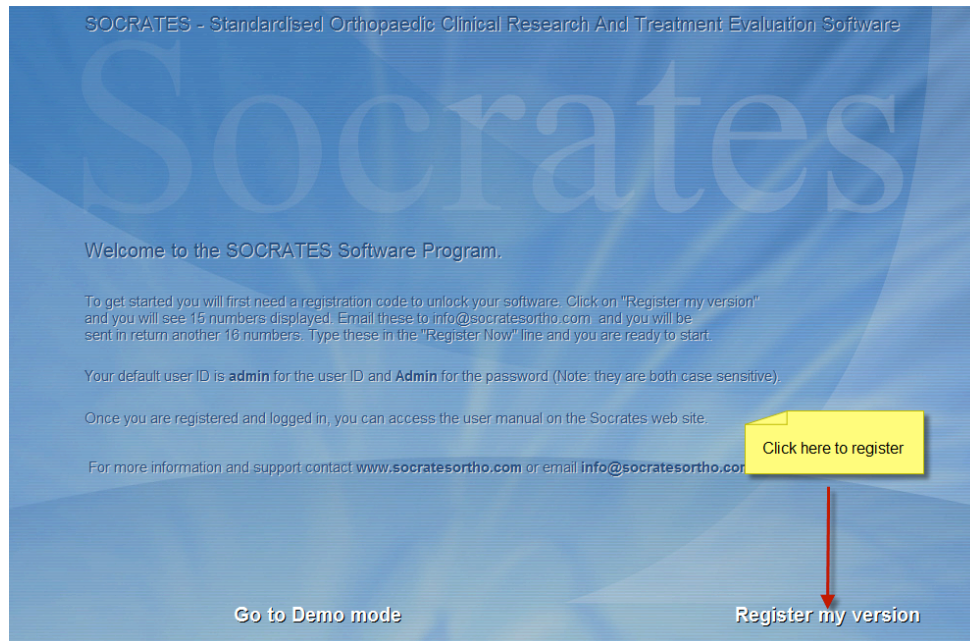
The program will then open into a window asking you for your details and serial number. This is a number starting with WBRN43XXXXXXXXX and will have been sent to you. For the user name and company enter your details.



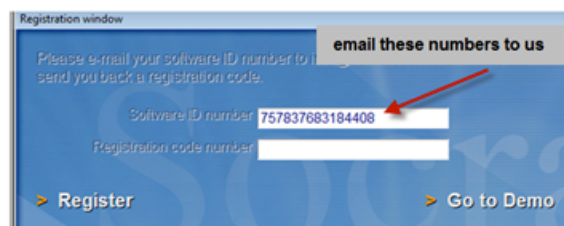
You won't need this again on the individual machine unless you reinstall it, and the same Serial Number can be used again. The number of workstation licenses can be increased if required at a cost of \$350 each. A new serial number will be issued with instructions for how to change it.

Registering Socrates

Read through the Introduction screen then select "Register Now" to unlock the program.



Email these numbers to info@socratesortho.com or call your local representative.



You will receive 16 numbers (Registration Code) which will unlock the program. We cannot provide you with these numbers to "unlock" your version without you first sending us the 15 numbers generated by your PC.

Note that you will need a **different registration number for each computer** as the numbers are unique to each machine unlike the program's serial number. Each of the computers will generate a different set of numbers so we can't give you back a number until we get yours from each computer. If you copy the settings from one connected user you can bypass the need to register each computer, see the instructions for how to do this.

You now need to connect to your SQL database. Go to the appropriate chapter for the type of database you are going to use whether it is PostgreSQL, or MSSQL.

INSTALLING SOCRATES ON MULTIPLE WORKSTATIONS

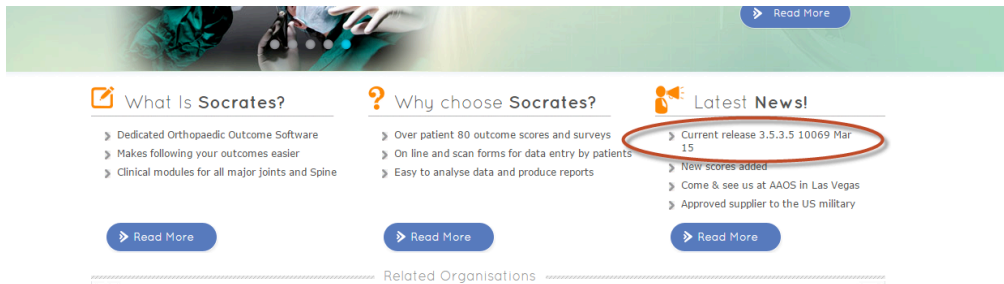
Once there is a copy of Socrates fully installed and connected to the SQL database you can copy some of the files from that user into an installation folder. It will automatically register and connect other users to the database on any subsequent workstations.

Note that if you are adding additional workstations you may need extra workstation licenses. Contact us for details.

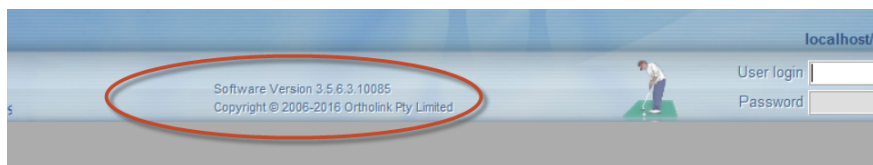
Check Version number

If you are reinstalling Socrates sometime after the initial installation it is likely that you will have updated since the initial install and are using a more recent version. You can check the home page of the web site for the most current release – www.socratesortho.com

Contact us for the most recent version of the full install .exe file. Note that if you have Socrates on more than one computer the others may need updating to bring them to the latest version.

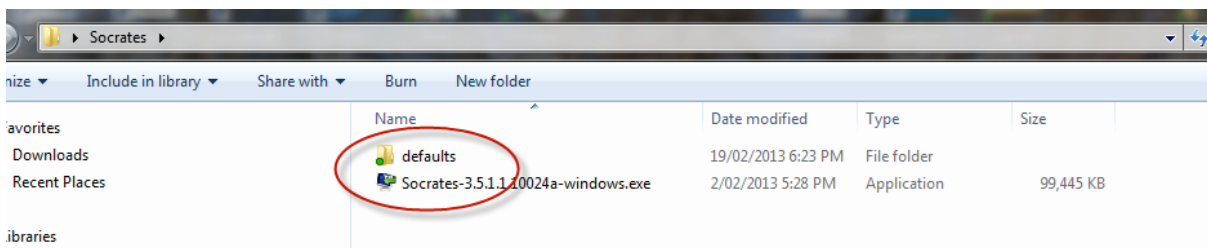


To check which version you were using go to the log in screen of Socrates.



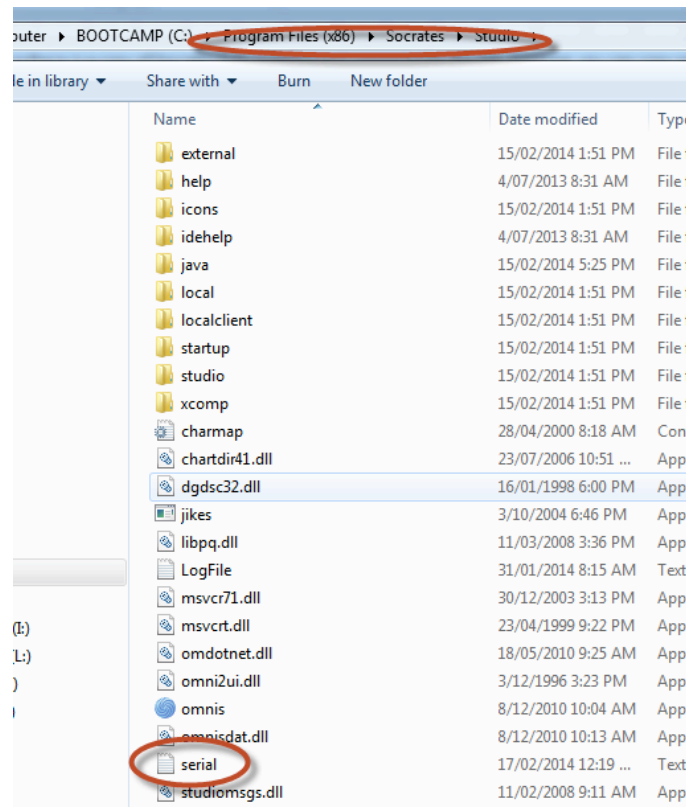
How to Create the Install folder

- ☐ Unzip the .exe file and save the **unzipped** Socrates installation .exe file in a folder - it doesn't matter what you call the folder.
- ☐ Create a new folder **inside** this folder called **defaults** – all lower case. This is what you should see in the main folder.

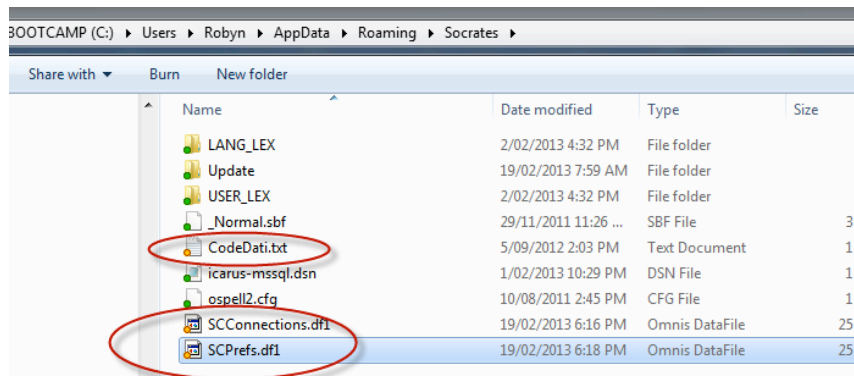


PC USERS

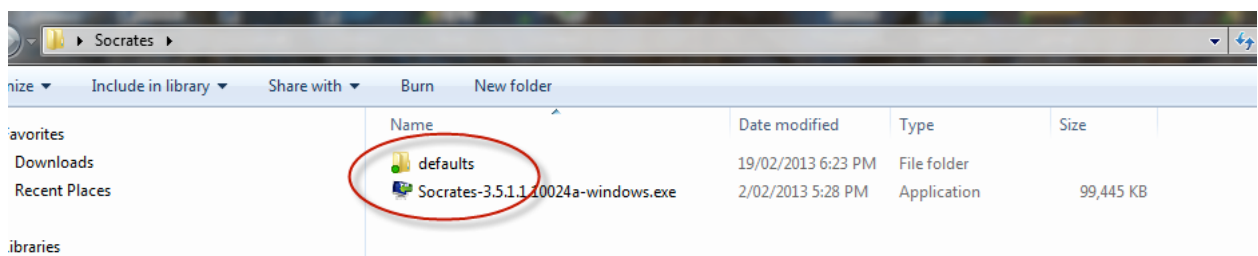
- ☐ Go to an existing installation of Socrates in Program Files of a user that is connected to Socrates – you need to be logged in as them. Locate the Studio folder in Program Files/Socrates/Studio and copy the file **serial.txt** into the defaults folder you created.



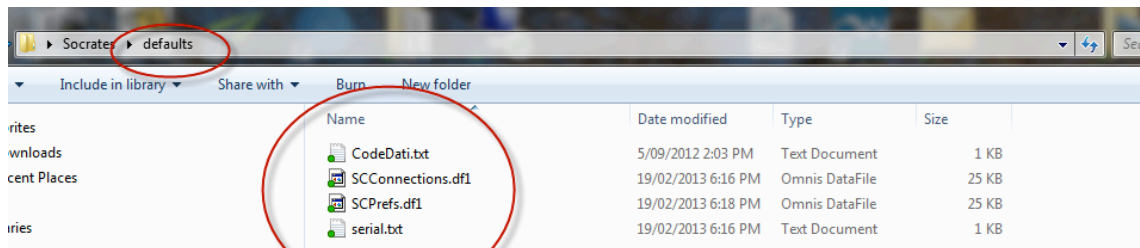
- Locate the Users folder /AppData/Roaming/Socrates and copy **SC Prefs**, **SC Connections** and **CodeDati.txt** into the defaults folder you created.



The main folder contents should be as below. Do not leave the zipped install folder in here, or unzip and run it from this folder or it won't copy the settings. **Unzip it outside this folder and copy the .exe file into this.**



Default folder contents



- ☐ Once you have these files in the correct folders double click the .exe file to install Socrates. It will install as usual but you won't need to enter any serial numbers or register it, and it will find the connection to the database. Once it is installed, start Socrates and log in as usual.

If you are using XP the files that are in the App Data folder are in Documents and Settings.

Mac Users

The files are located as below. Copy these into a folder called defaults which is inside the main folder with the unzipped copy of the .exe install file.

Global settings are stored in: /Library/Application Support/Socrates/

- ☐ User settings are stored in :
 - ☐ /Users/<username>/Library/Application Support/Socrates/
 - ☐ It's likely that the Library folder for the user settings may not be visible, if not you will need to open up Finder, select the Go menu, hold down the OPT key and there should be a library icon visible. Click on that and it will let you into the user folder.
 - ☐ Serial.txt will be located in \Applications\Socrates\Studio.app\Contents\MacOS\serial.txt

Name	Date modified	Type	Size
LANG_LEX	14/10/2014 5:12 PM	File folder	
log	4/07/2013 8:33 AM	File folder	
Update	14/10/2014 5:12 PM	File folder	
USER_LEX	14/10/2014 5:12 PM	File folder	
_Normal.sbf	29/11/2011 11:26 ...	SBF File	3 KB
CodeDati.txt	29/08/2014 3:41 PM	Text Document	1 KB
ospell2.cfg	10/08/2011 3:45 A...	CFG File	1 KB
SCConnections.df1	5/12/2014 12:29 PM	Omnis DataFile	25 KB
SCPrefs.df1	5/12/2014 12:57 PM	Omnis DataFile	25 KB
size.txt	19/09/2014 10:30 ...	Text Document	1 KB

MSSQL users

IF you are using MSSQL you need to copy the DSN file from wherever it is located in the user profile you are copying the files from, to the same location on the computer of the new user. The location of the DSN file will be displayed on the log in screen of Socrates.

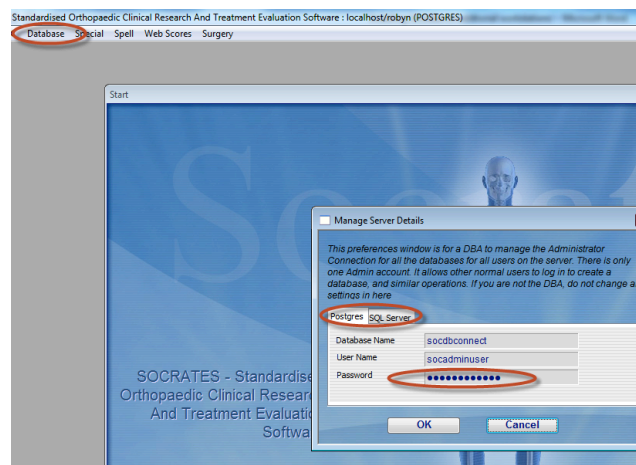
Manually copying these files.

If you have already installed Socrates without adding in these files to the install folder you can manually copy these files from another connected user into the same location on the new computer. This will remove the need to add it the serial and registration numbers, as well the need to add in the admin passwords, and IP address of the computer where the database is hosted. If you have installed it without using the default files reinstalling it again with the files in the defaults folder WONT enable these connections. Once it has been installed without these default files you need to copy and paste them in manually.

Reinstalling without using defaults

If you don't install additional machines using this method - i.e you have unzipped and installed Socrates using only the .exe Install file and you haven't copied the files across manually you will need to do the following.

- ❑ Enter the serial number and registration code when prompted after starting Socrates.
- ❑ Connect to the database manually. This involves first entering the socadmin user password that was created when the SQL database was set up, you or your IT group should have this on file. To do this go to the File Menu at the top of the screen, select Database, then *Manage Server details* and replace the existing password for whichever SQL database you have with yours. This needs to be done on each client machine. If you don't do this that machine will not be able to connect to the database.



- ❑ You will then need to go to Manage Database Connections and add the database details – server type, IP address or host name where the database is stored, and the user name and password of the database. Note that this is not the same as the ones you use to log into Socrates, these were created when the database was first set up.

INSTALLING SOCRATES

